



U.S. National Ice Center

Providing Domain Awareness at High Latitudes



USN



USCG

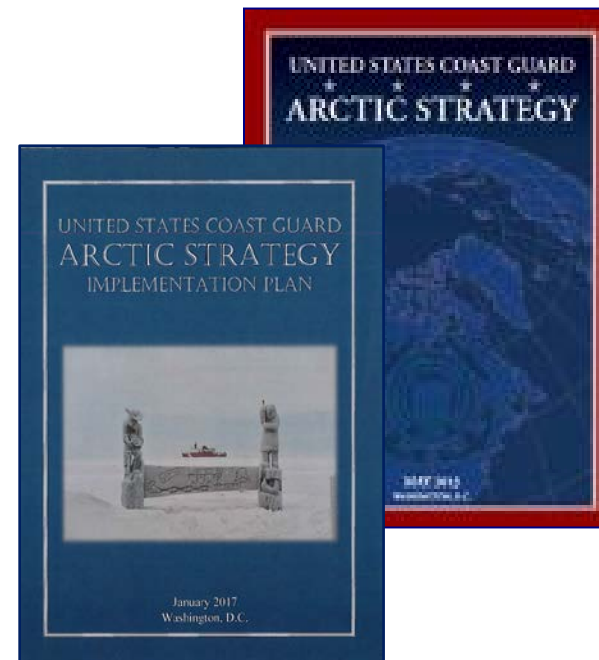
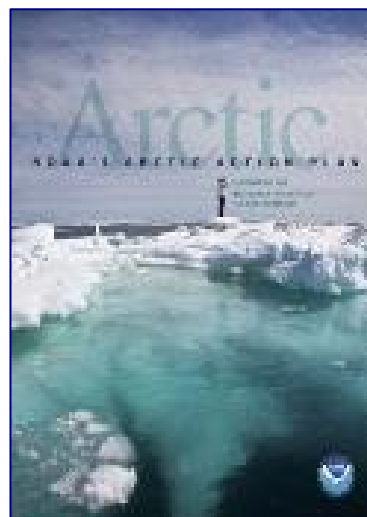
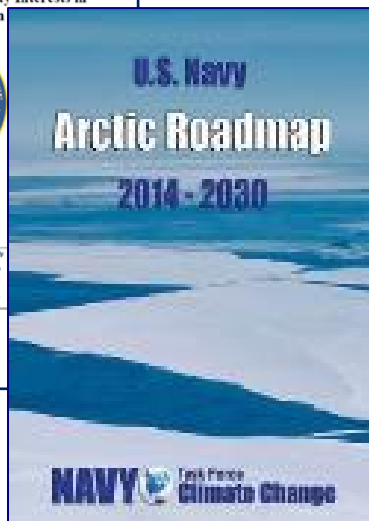
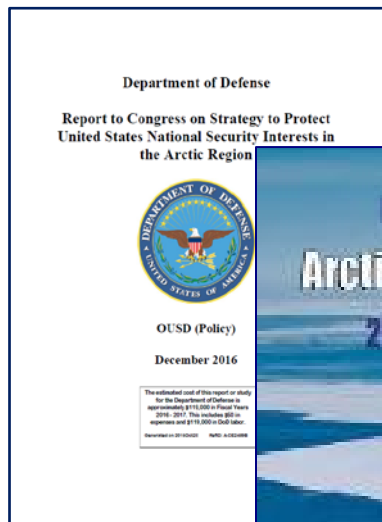


NOAA

Director: CDR Ruth Lane, USN
18 July, 2017



Strategic Alignment



The U.S. National Ice Center provides global to tactical scale ice and snow products, ice forecasting, and related environmental intelligence services for the United States government.



Environmental Domain Awareness

Characterization: Observation, Analysis, and Prediction



Satellites



Buoys



Ship Observations



Aircraft



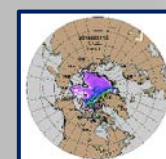
Webcam



Radar



Surface Observations

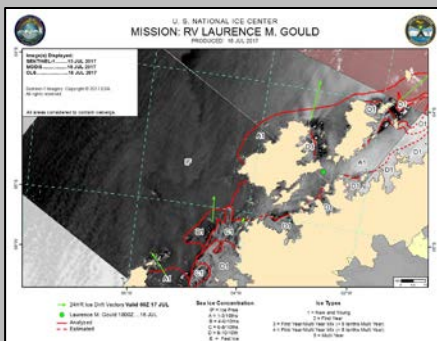


Models

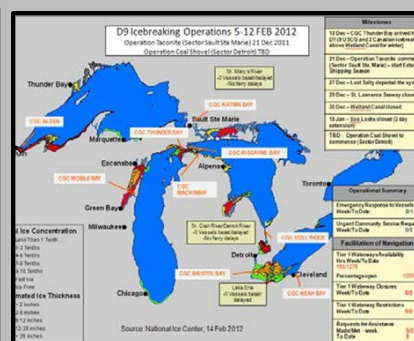
Exploitation: Tailoring and Integration



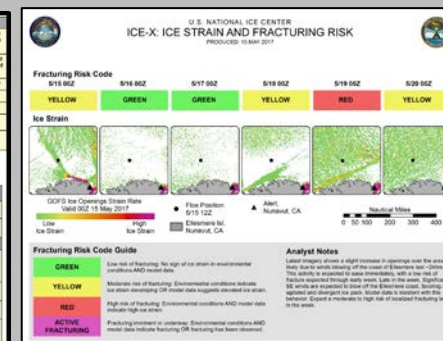
Multisensor Analyzed Sea Ice Extent (NSIDC)



Annotated Imagery



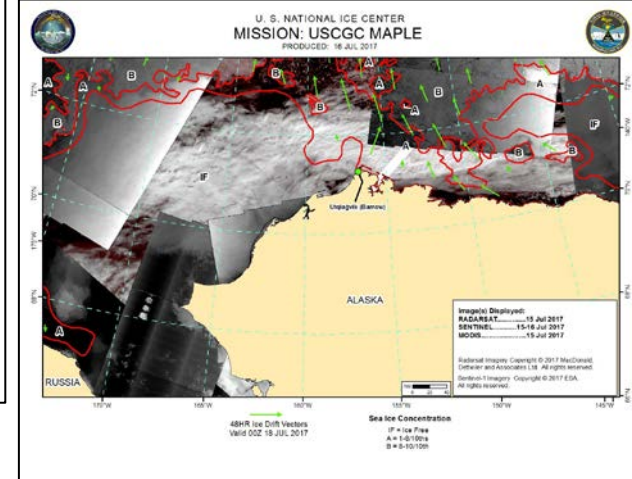
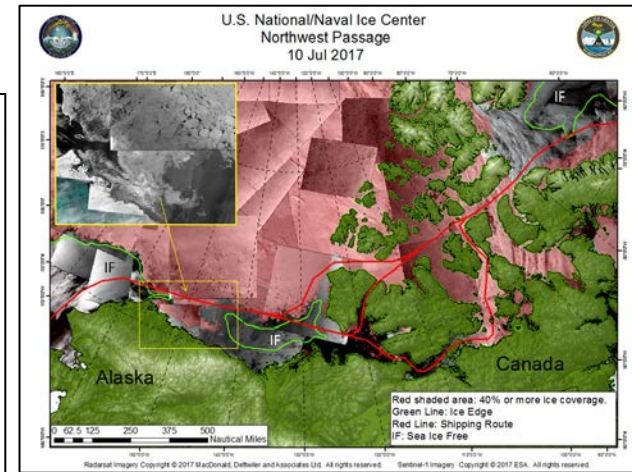
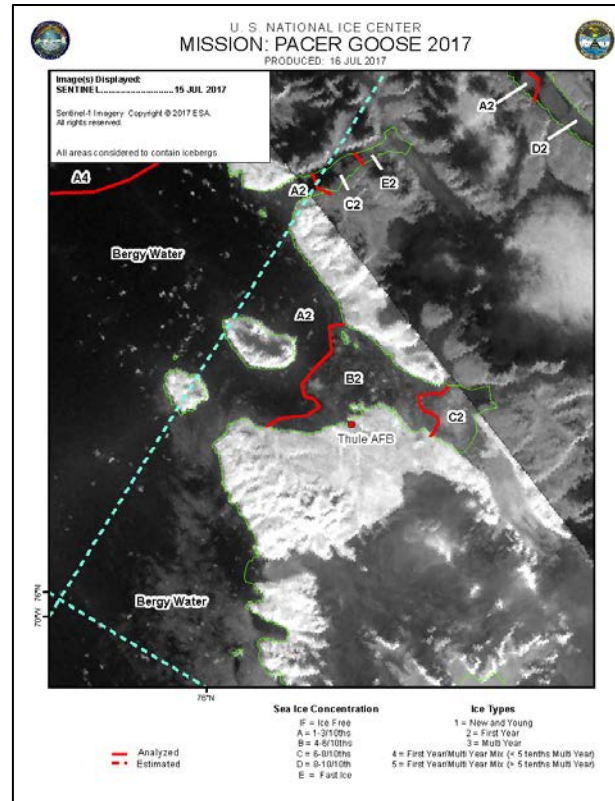
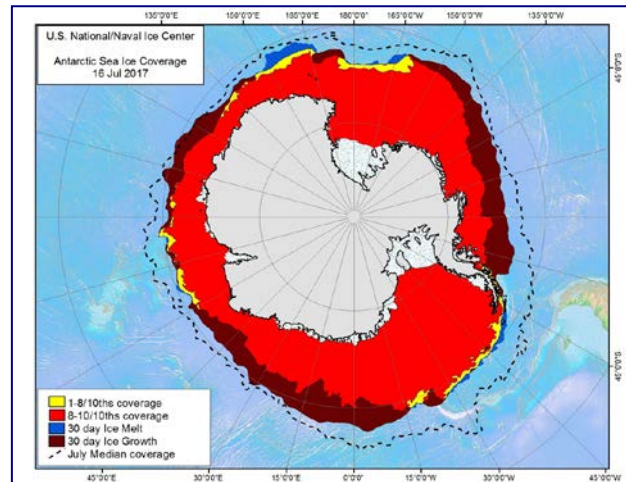
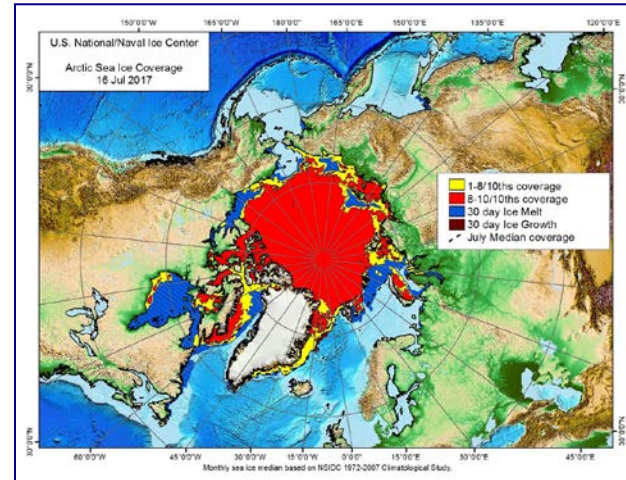
Asset Management



Risk Assessment



Providing Domain Awareness at High Latitudes



Consistent... Relevant... Accurate... Timely

Achieving National Objectives through Partnerships





Questions & Comments



Command Duty Officer

nic.cdo@noaa.gov

nic.cdo@navy.smil.mil

Watch floor: (301) 817-3975

Cell phone: (301) 943-6077

www.natice.noaa.gov

www.facebook.com/nationalnavalicecenter