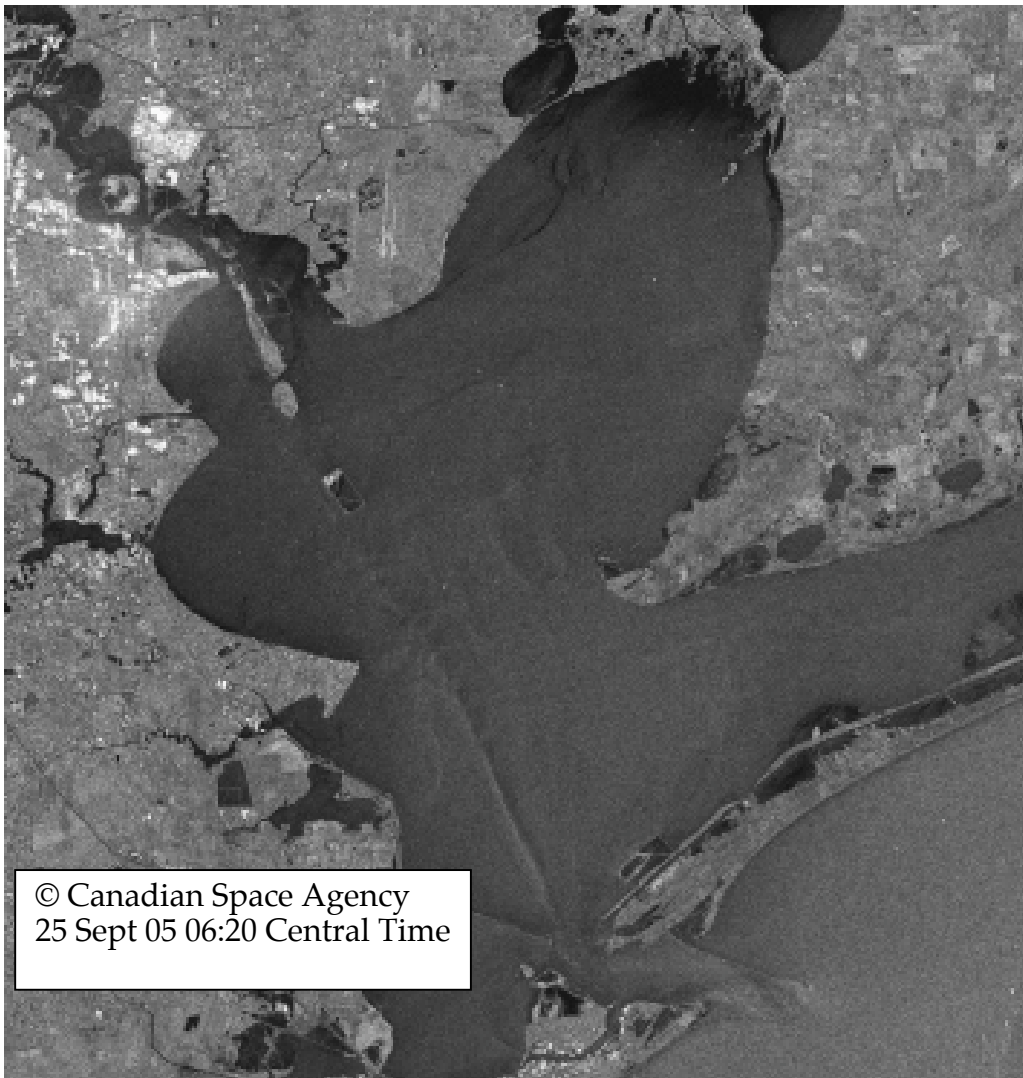


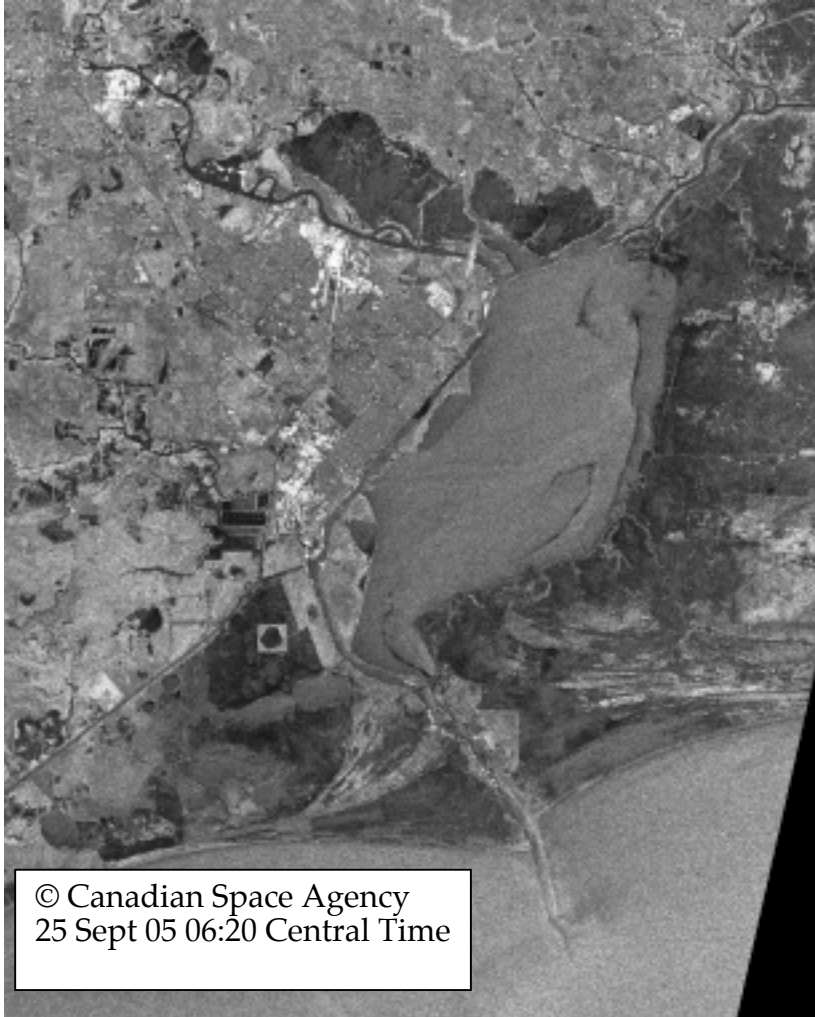
September 25, 2005 06:20 Central Time
RADARSAT -1 Preliminary Analysis

The imagery from NIC_51635_08.tif primarily covered Galveston Bay to Sabine Lake. There was not much coverage offshore. The winds from NDBC Sabine C-MAN (29.67° N, 94.05° W) at the time of acquisition were about 15 knots from the south-southwest. We have identified anomalies in several areas on the image that may require further investigation by on-scene observers.

The first group of anomalies is in Galveston Bay (Figure 1). There is a series of linear features in Trinity Bay centered near 29° 43' 19.33"N, 94° 48' 10.34"W. North of Houston Pt., there are more anomalies centered near 29° 31' 3.96"N, 94° 58' 7.28"W and 9° 27' 37.52"N, 94° 55' 59.32" W.



The second group of anomalies are in Sabine Lake (Figure 2). There are anomalies (a series of linear features oriented north to south) on the east side of the lake centered at $29^{\circ} 53' 39.22''\text{N}$, $93^{\circ} 46' 55.63''\text{W}$. In the northern end of Sabine Pass, one anomaly was observed in the middle of the channel centered at $29^{\circ} 46' 7.06''\text{N}$, $93^{\circ} 54' 0.20''\text{W}$.



Due to licensing issues, the raw SAR data is appropriate only for internal distribution on the Internet to U.S. Government agencies. However, this report and hard copy can be distributed to anyone.