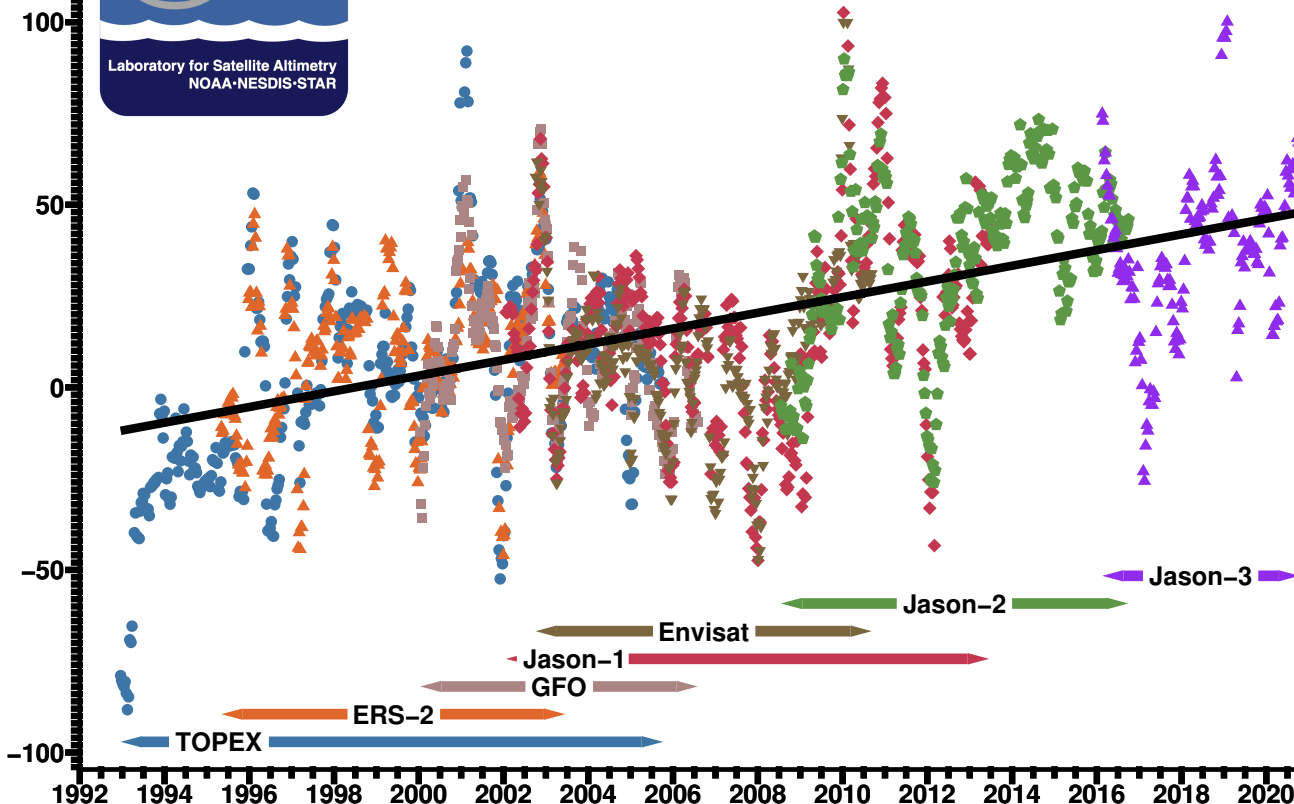


Change in mean sea level [mm]



Adriatic Sea mean sea level
seasonal signals removed
trend: 2.1 ± 0.4 mm/year



1992 1994 1996 1998 2000 2002 2004 2006 2008 2010 2012 2014 2016 2018 2020

TOPEX

ERS-2

GFO

Jason-1

Envisat

Jason-2

Jason-3