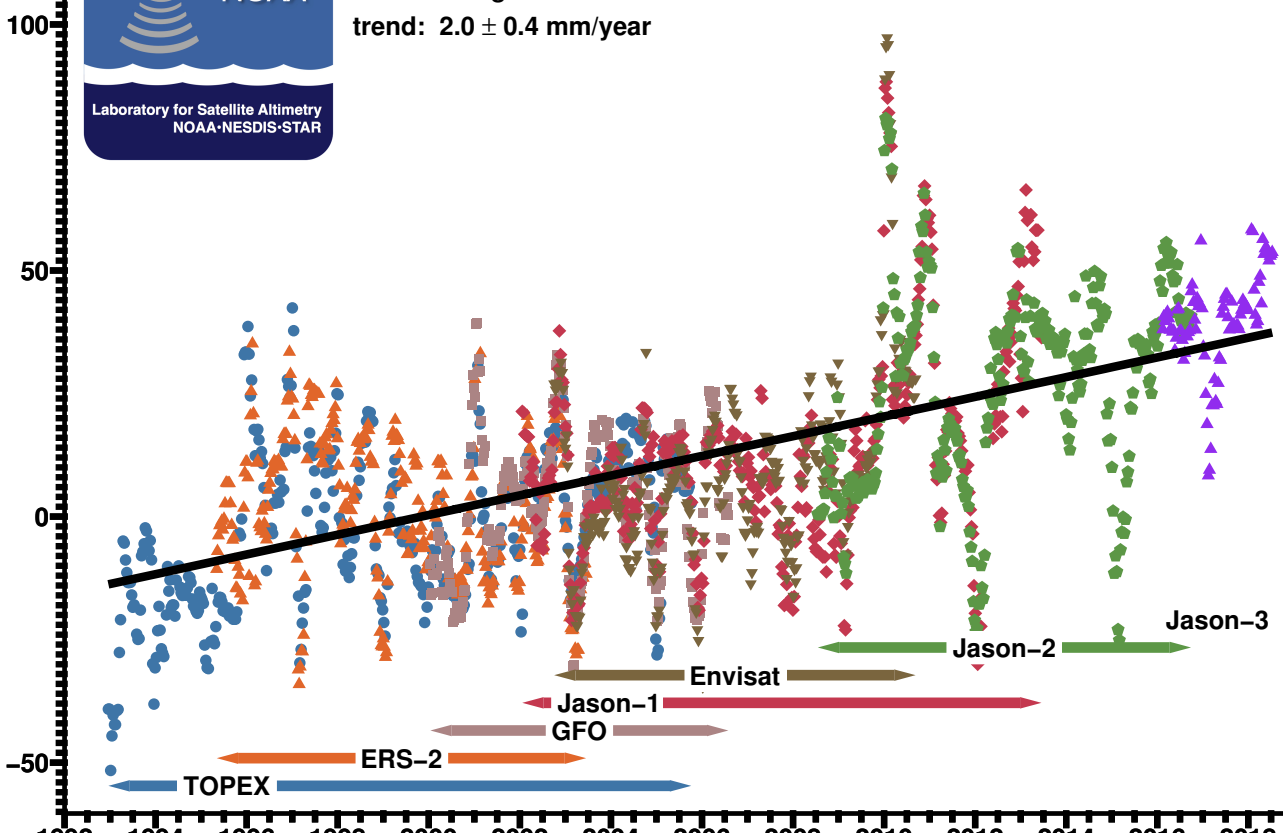


Change in mean sea level [mm]



Mediterranean Sea mean sea level  
seasonal signals removed  
trend:  $2.0 \pm 0.4$  mm/year



TOPEX

ERS-2

Jason-1

GFO

Envisat

Jason-2

Jason-3

1992 1994 1996 1998 2000 2002 2004 2006 2008 2010 2012 2014 2016 2018