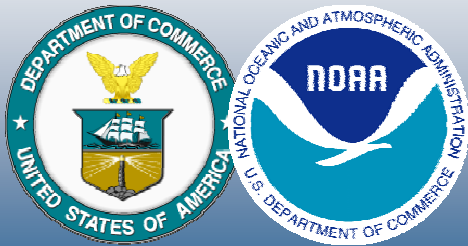


# NOAA in the Arctic

Building Partnerships to Benefit Society

A Presentation to the Symposium:  
*Impact of an Ice-Diminishing Arctic on Naval and Maritime Operations*



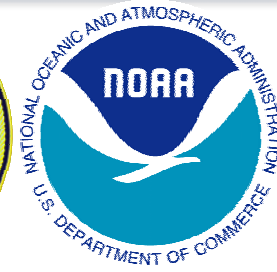
Scott C. Rayder  
NOAA Chief of Staff  
July 10, 2007

# NOAA's Partnership with National Ice Center

NOAA is proud to be a partner with the National Ice Center for its 30 years of operation.

The National Ice Center Partnership with NOAA, Navy and Coast Guard is a model of how partnerships can benefit society.

NOAA is pleased to host the headquarters of the National Ice Center at the new NOAA Satellite Operation Facility in Suitland, Maryland.





# NOAA's Work in the Arctic



Tiksi Weather Station—Russia



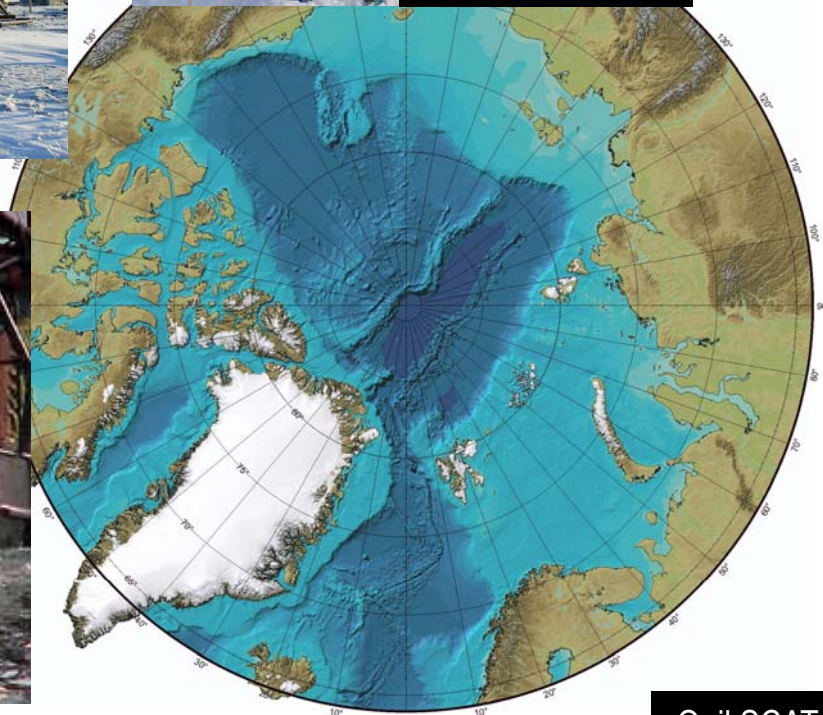
Ice Core Sampling



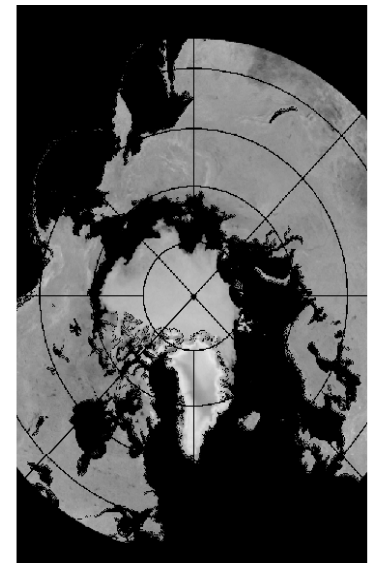
Inexpensive Airborne Expendable Ice Buoy



Bering Sea—Fisheries Research Vessel

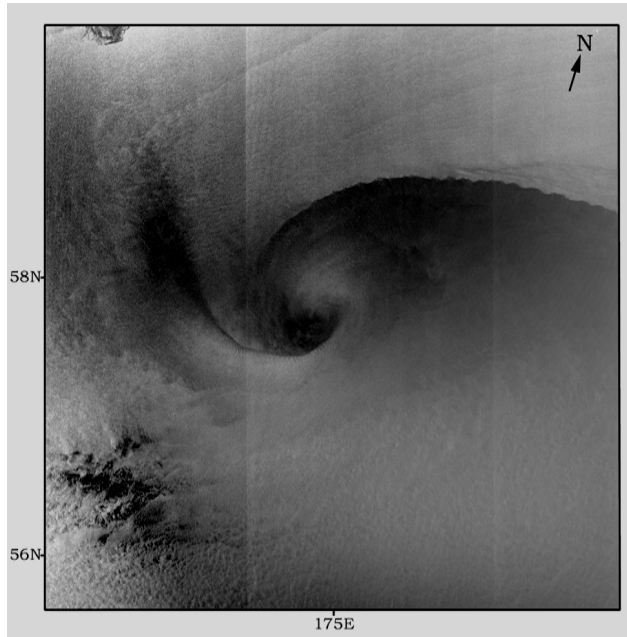


QuikSCAT Northern Hemisphere Ice Map

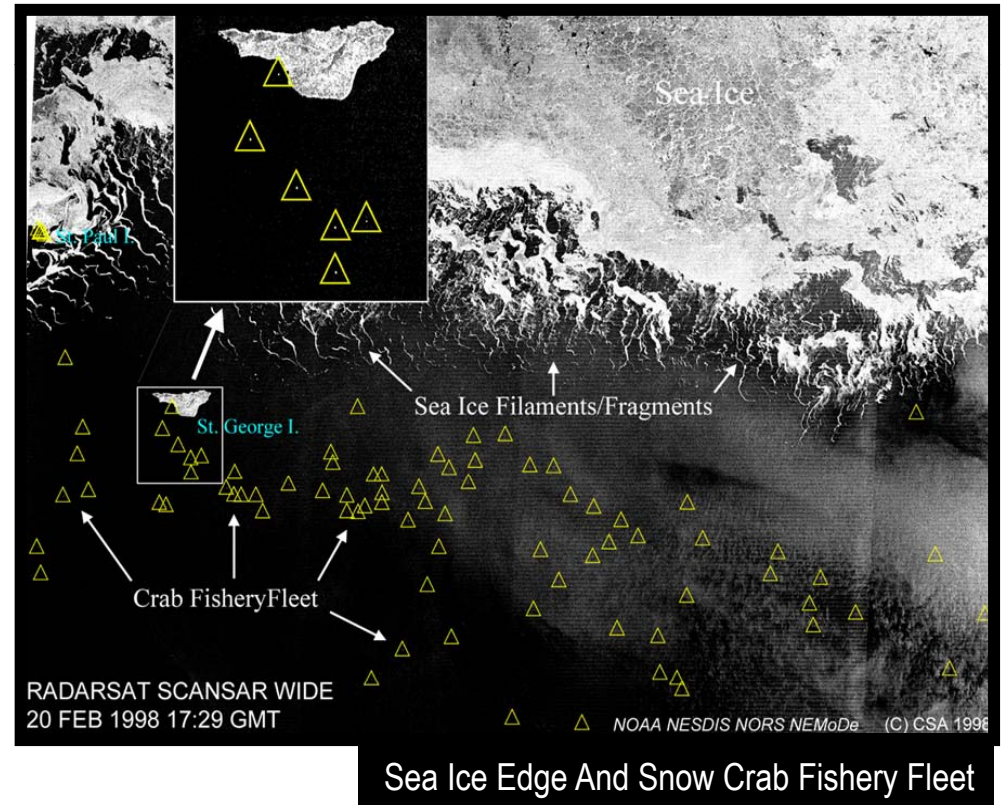


# NOAA Satellites and the Arctic

Synthetic Aperture Radar (SAR) Imagery provided by the Canadian Space Agency and processed by NOAA's Satellite and Information Service is used by NWS Anchorage Forecast Office to create products for safety of fisheries, marine transportation, and low-flying aircraft



SAR image of polar mesoscale cyclone



Sea Ice Edge And Snow Crab Fishery Fleet



# Climate Monitoring in the Arctic

## Barrow Global Climate Change Research Facility



Senator Ted Stevens supports NOAA research in Alaska



# NOAA Research in the Arctic

NOAA Atmospheric Observatory in Eureka, Canada



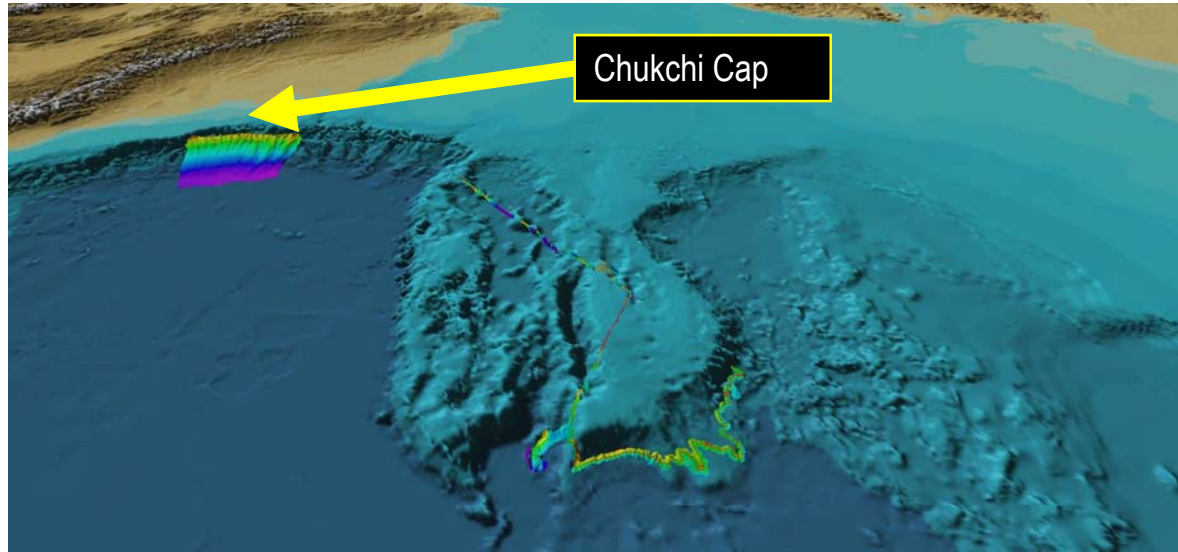
Mooring Site in Bering Sea

Arctic species and their food supply in Alaska are threatened from loss of ice/snow by 2040





# NOAA and Transportation



NOAA Ships FAIRWEATHER and RAINIER surveying in Alaskan waters



Commercial Fishing Boats in Arctic waters