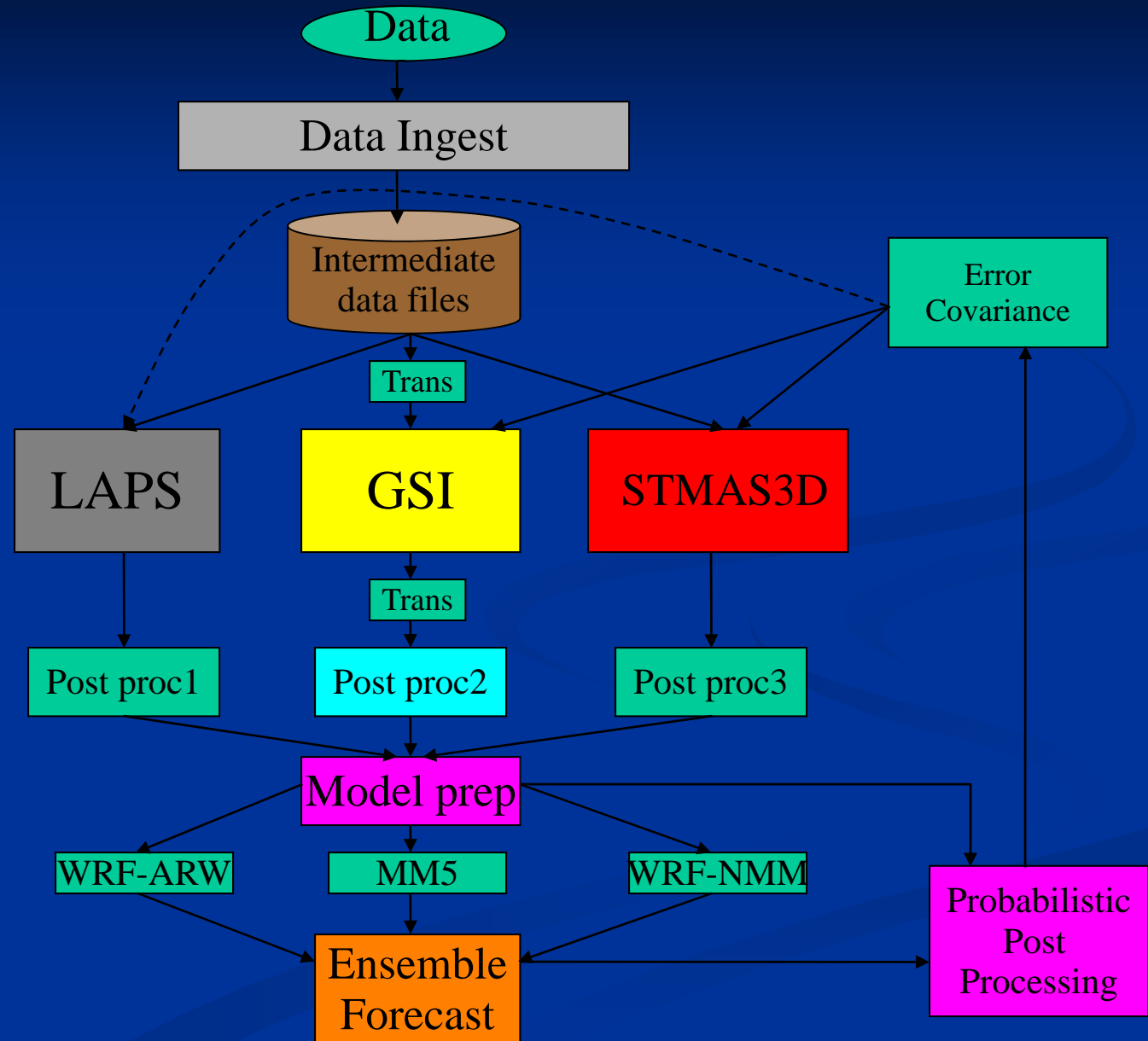


LAPS DA Configuration



Precipitation Analysis Inputs

Radar Reflectivity

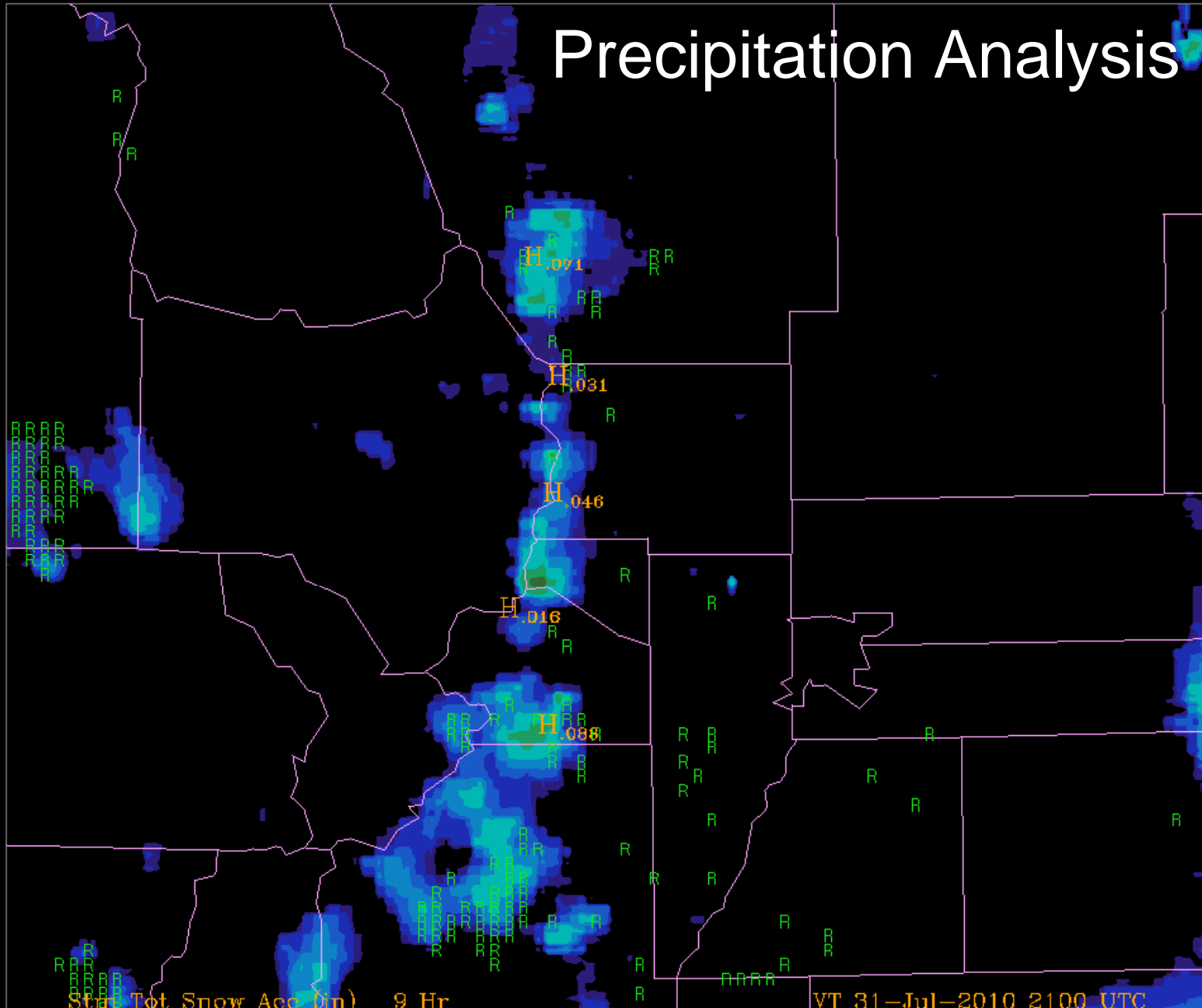
Rain Gauges

Model First Guess

NOAA/ESRL LAPS 1km

0.0 0.01 0.02 0.05 0.1 0.2 0.5 1.0 1.5 2 3 4 5 7 10

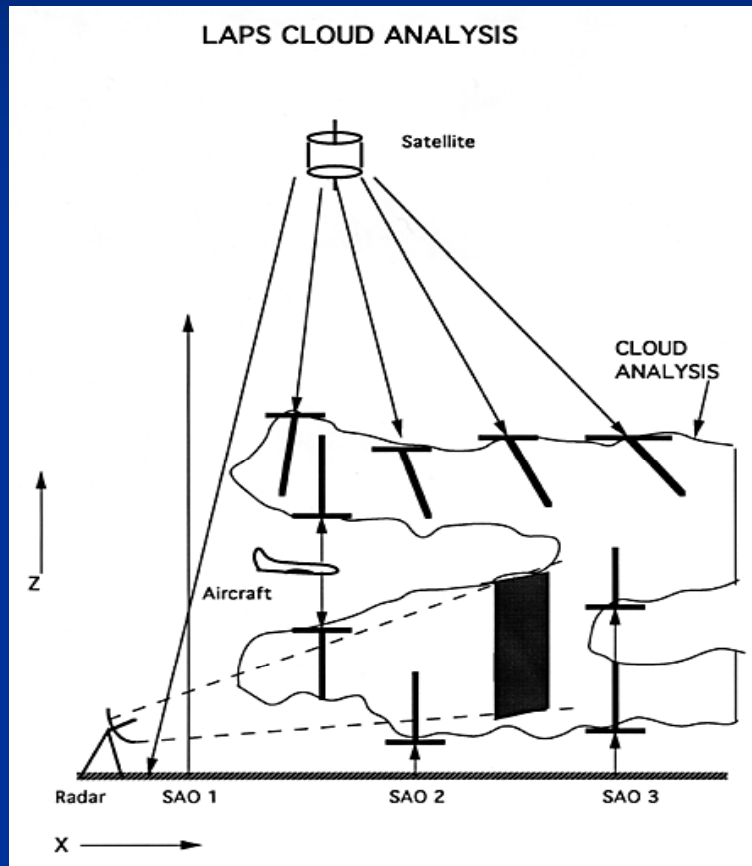
Precipitation Analysis



Stm Tot Snow Acc (in) 9 Hr
Stm Tot Prep Acc (in) 9 Hr
Sfc Precip Type (thresh)

VT 31-Jul-2010 2100 UTC
VT 31-Jul-2010 2100 UTC
VT 31-Jul-2010 2100 UTC

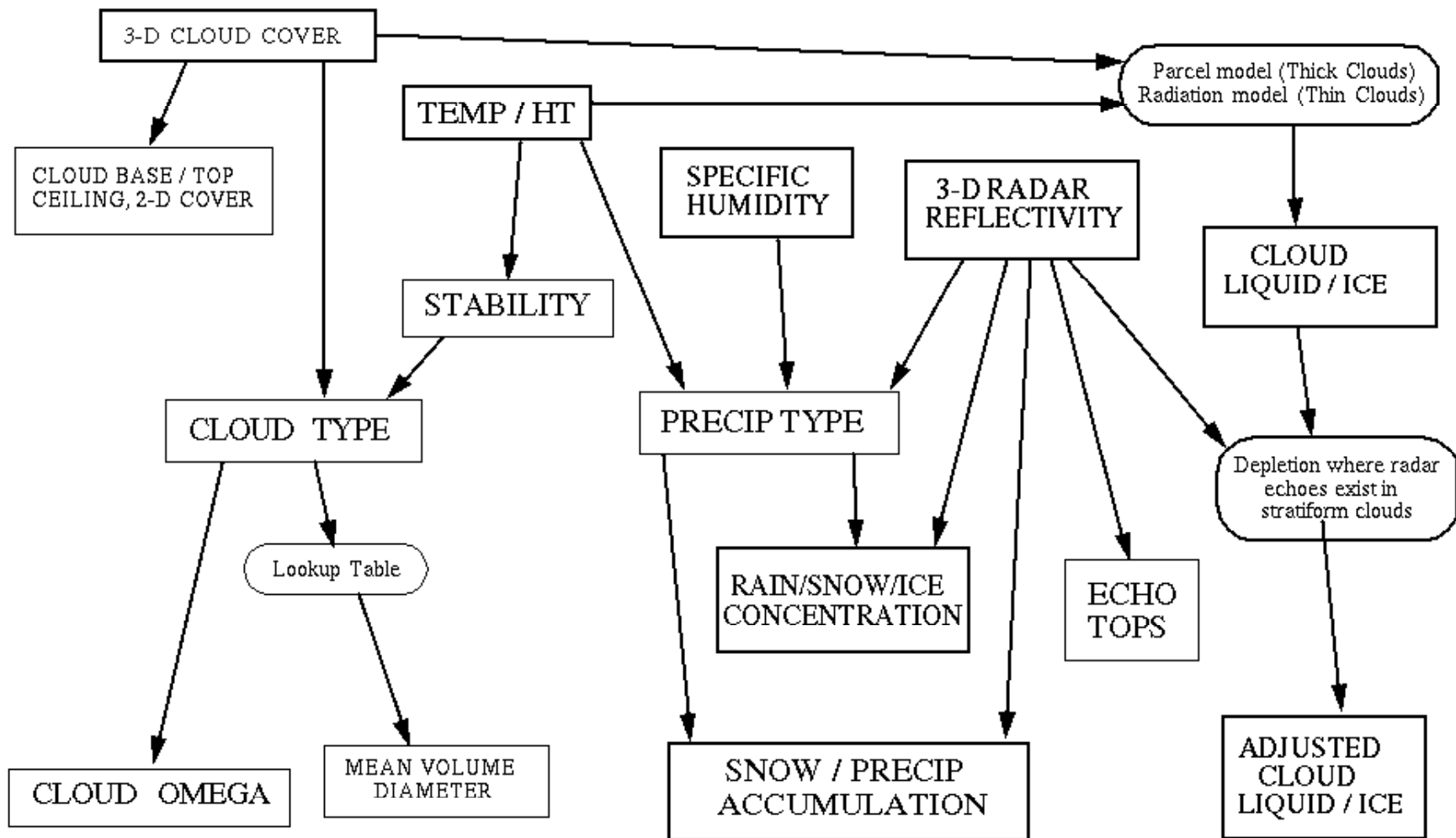
Cloud Analysis Scheme



- Uses satellite Vis and IR
- Aircraft observations
- Surface observations
- Radar
- Interpolates cloud obs to grid with SCM
- Cloud feeds back into water vapor analysis

Derived products flow chart

LAPS DERIVED CLOUD / HYDROMETEOR FIELDS



What FAB can do with GPM

Validation by comparing with 3-D radar & microphysical analysis

Development of forward models to bring GPM data into STMAS analysis and WRF model forecasts